

THE ART OF  
**ARSENE  
LUPIN**  
Once A Thief





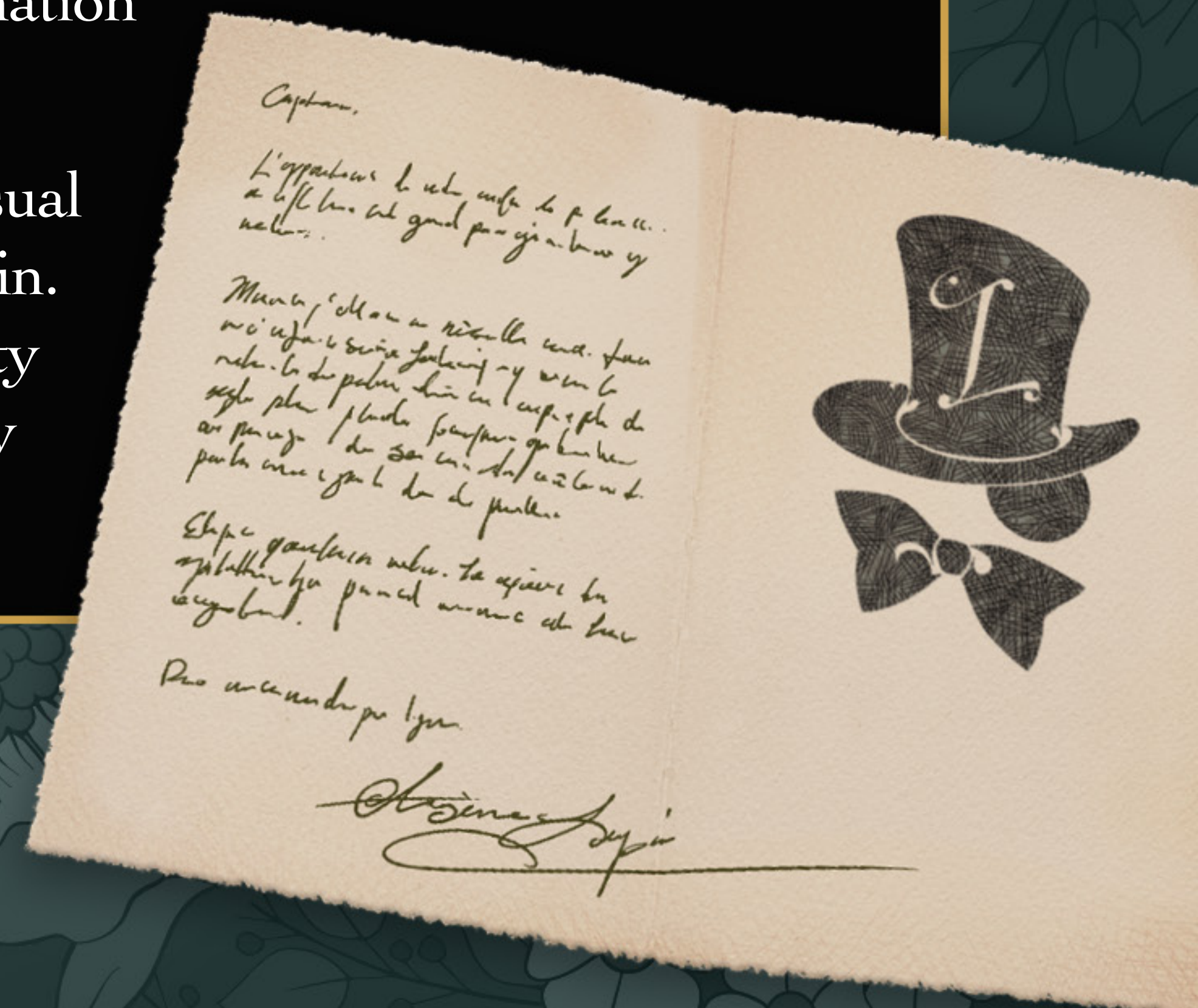
Welcome to the world of Arsène Lupin – Once a Thief, a world where elegance, wit, and daring adventure come to life through the eyes of one of literature's most enigmatic thieves. In this collection, we celebrate not only the essence of Lupin's legendary escapades, but also the artists who have skillfully woven their vision into every detail of this game. From early concept sketches to the final strokes of character design, and the intricate UI elements that guide your journey, this art book is a tribute to the imagination and craftsmanship that brought this world to life.

As you explore these pages, immerse yourself in the visual journey that captures the charm and cunning of Arsène Lupin. Each piece of art is a testament to the passion and creativity that defines the heart of this game, inviting you into a story of intrigue and timeless style.



**Spoilers alert!**

This artbook features images and texts which may contain MAJOR spoilers relating to the game's plot. If, for you it's all about the plot and you still haven't completed the game, we recommend you do so before enjoying this artbook.



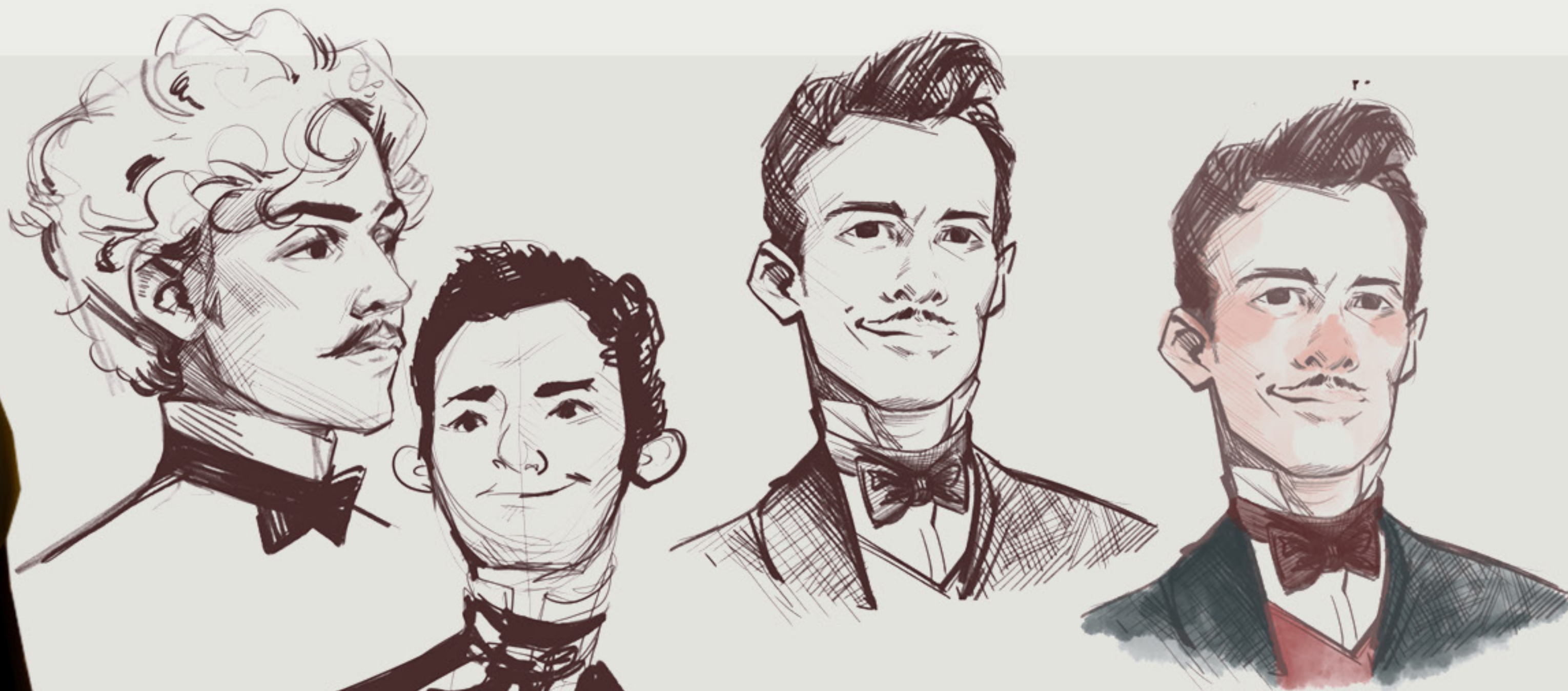


# CAST





# Arsene Lupin











May need to be more "country" fancy

















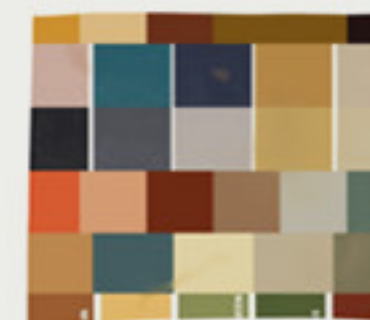
# ◆ Inspector Ganimard ◆







Ganimard\_dev\_001



Gruff



3a →



3b



3c

capas cool,  
possible?



④ Most cop-like



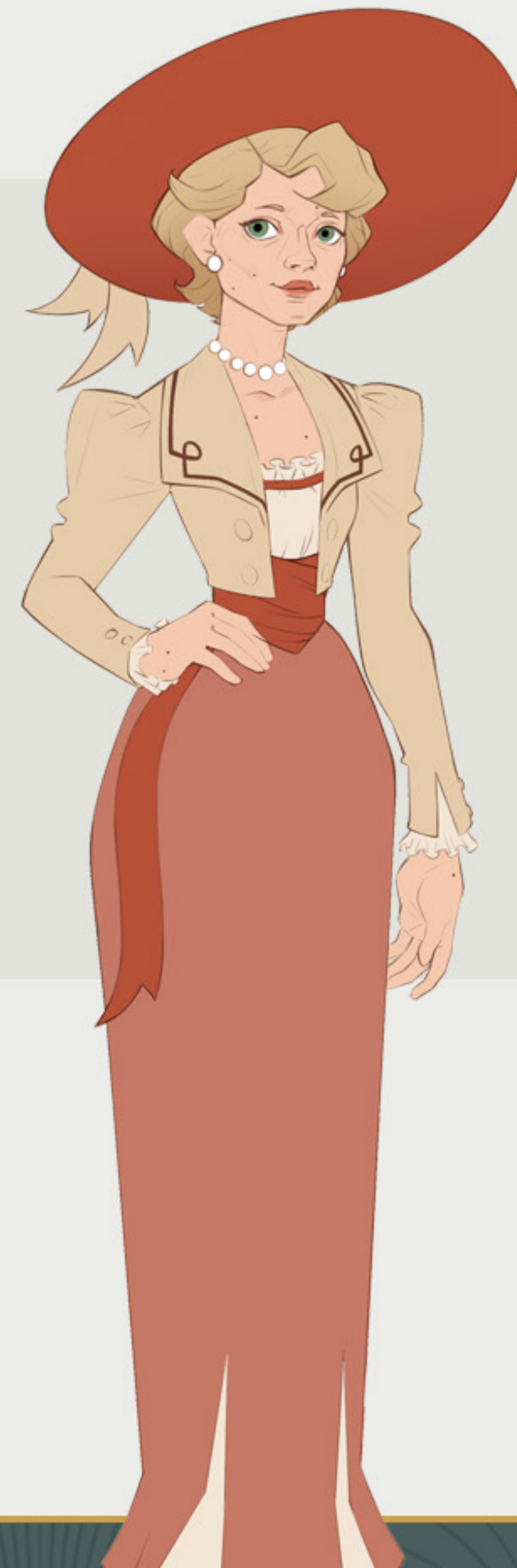
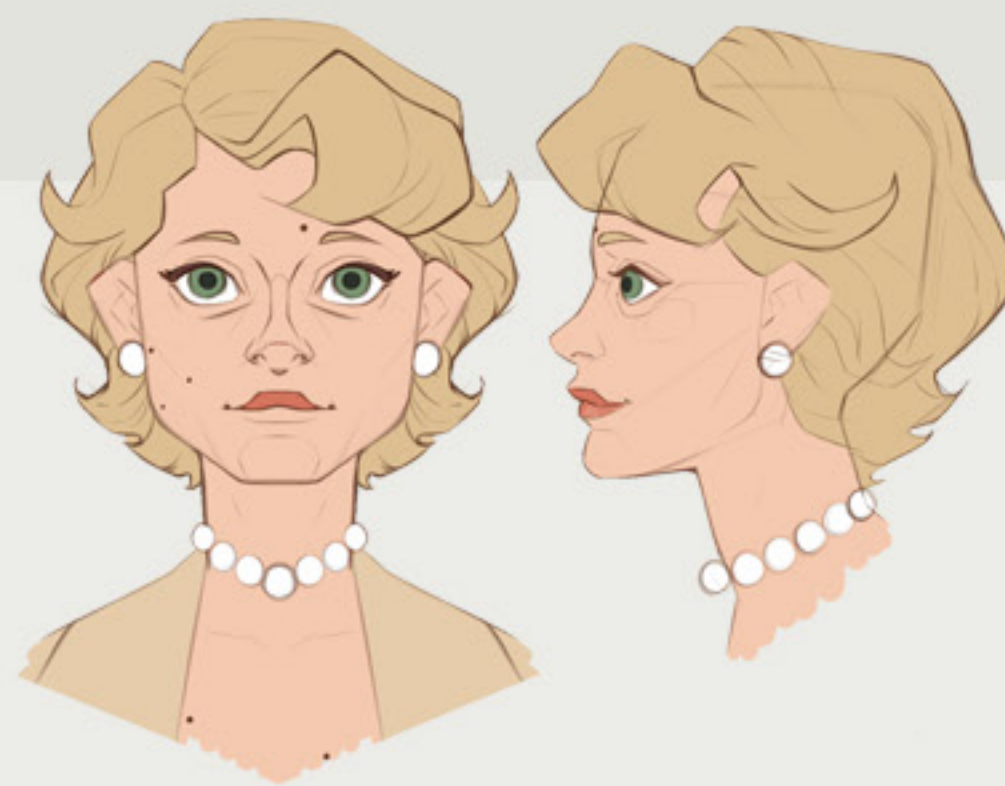
⑤ too "formal"



⑥ excentric



# Nellie Underwood







elegant  
up  
from  
long  
eleg

LUPIN\_Nelly\_dev-001







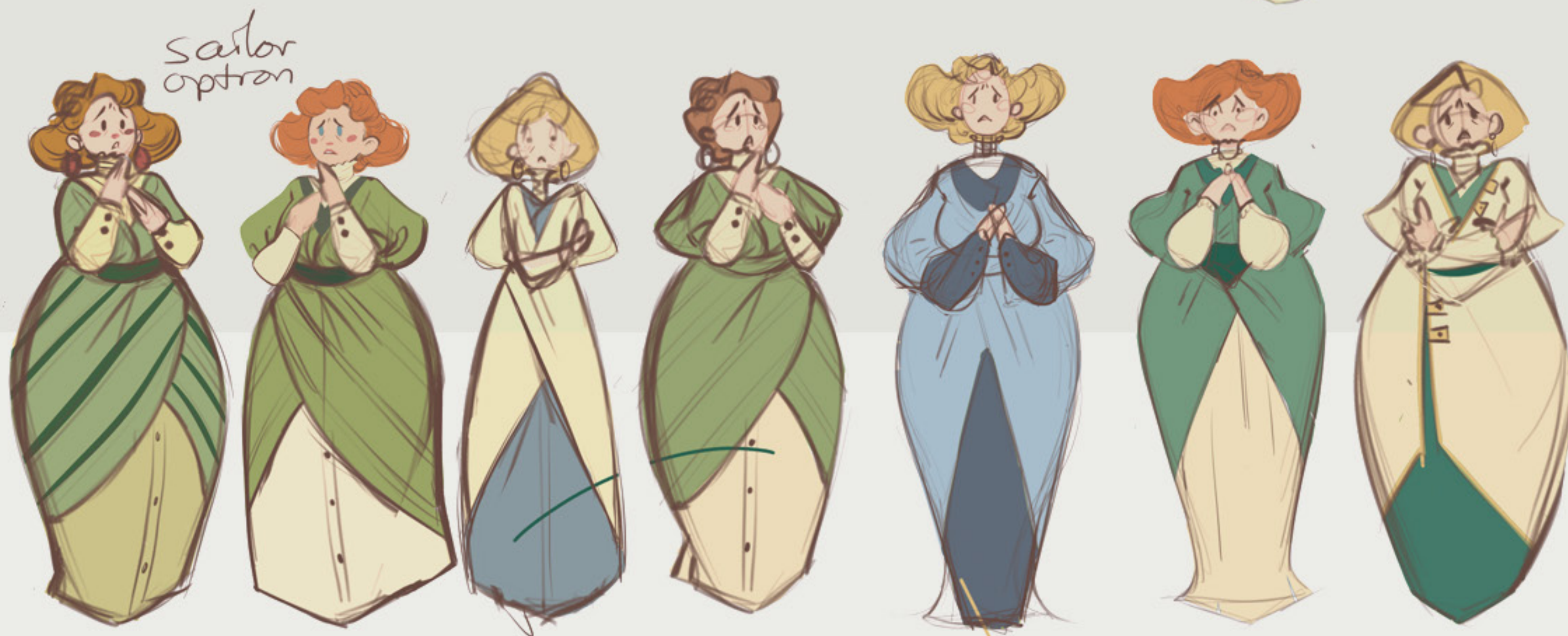




# Lady Jerland











# Herlock Sholmes





# Georges Devanne

Georges  
Devanne



Cheerful  
Storyteller  
friendly  
old man  
social





# Guards





## ◆ House staff ◆







◆ The Judge ◆

◆ Rozaine ◆



◆ Baron Cahorn ◆



◆ Crew ◆

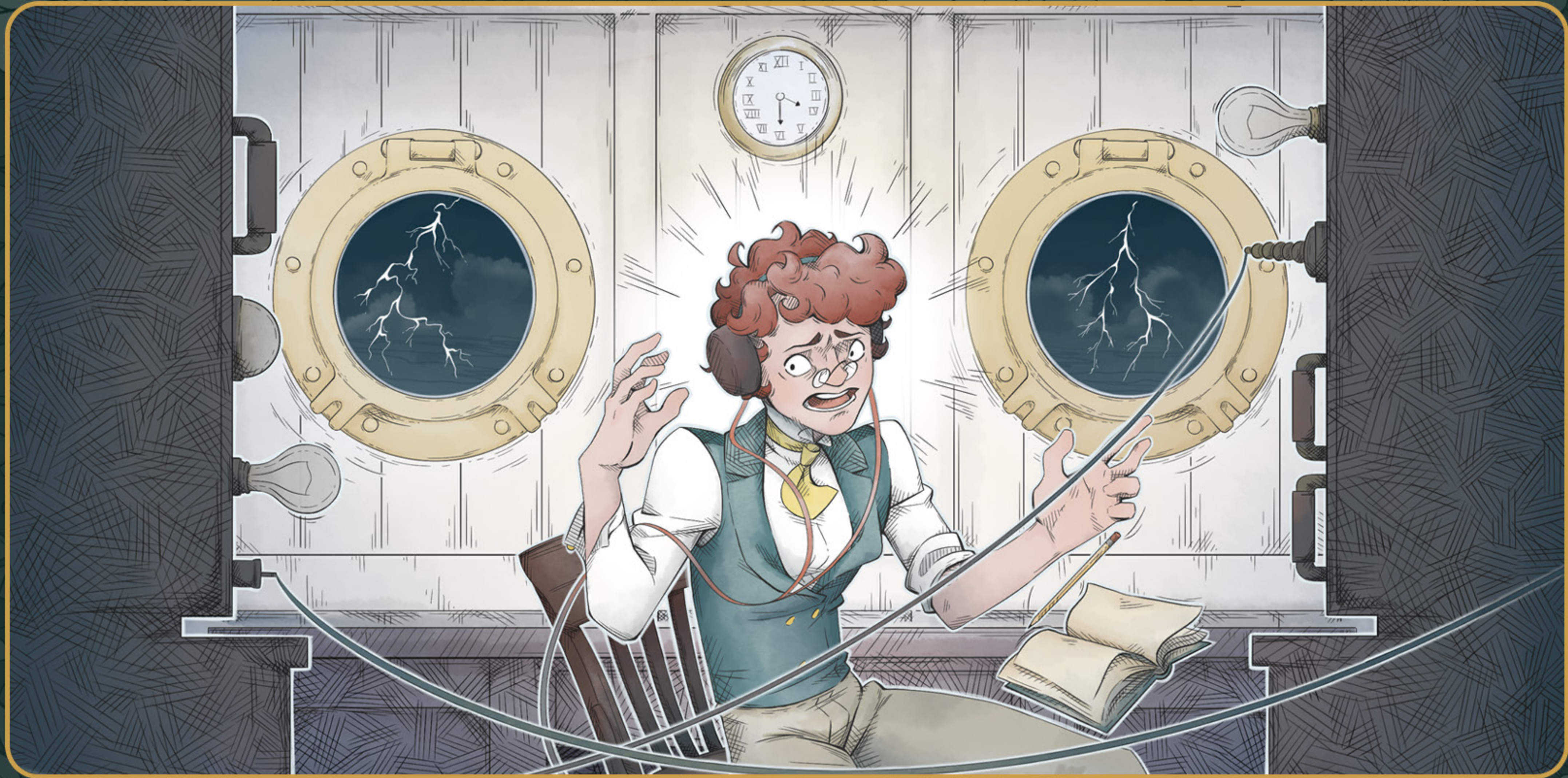
◆ Mr. Cheddar ◆

◆ Captain ◆





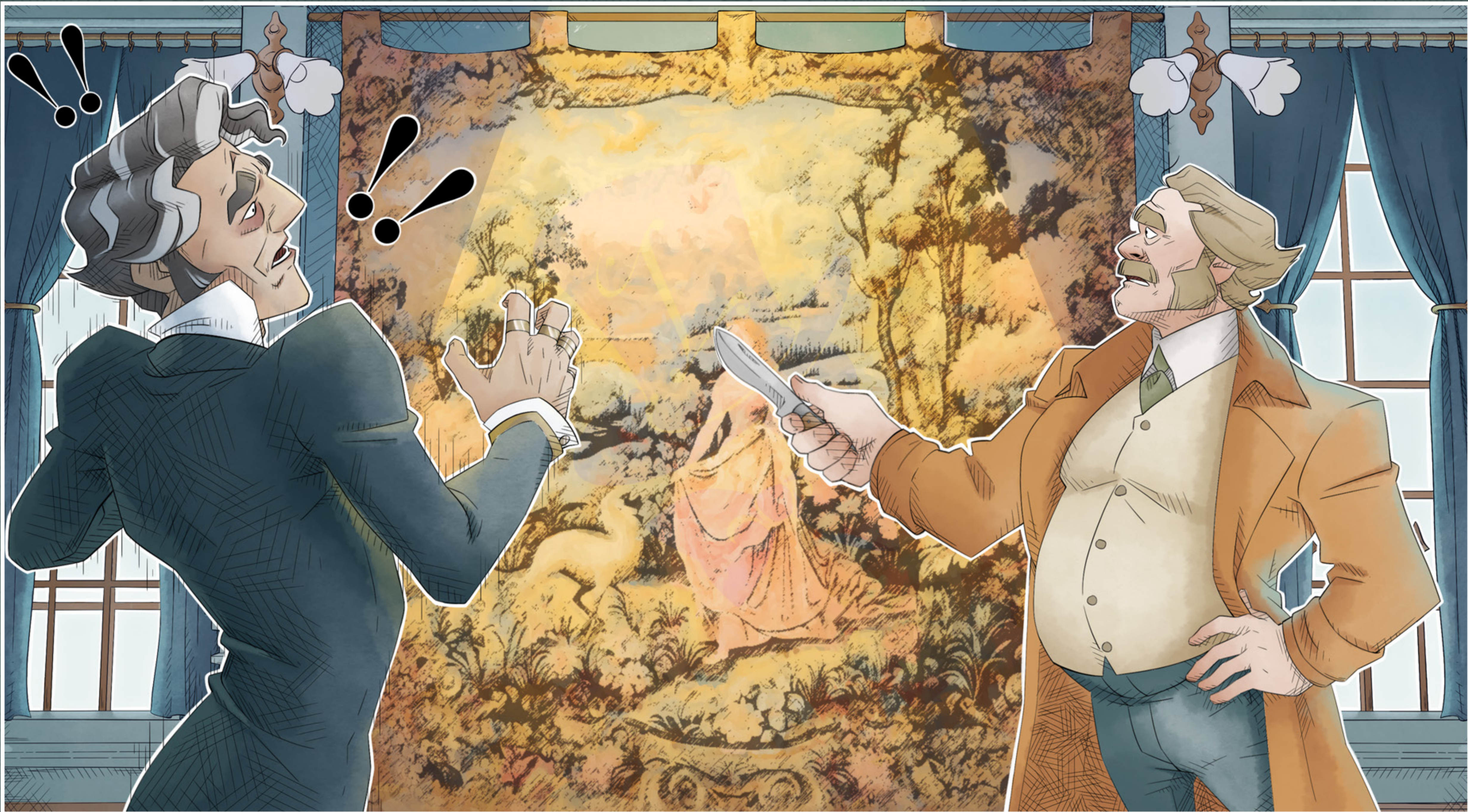
# ILLUSTRATIONS







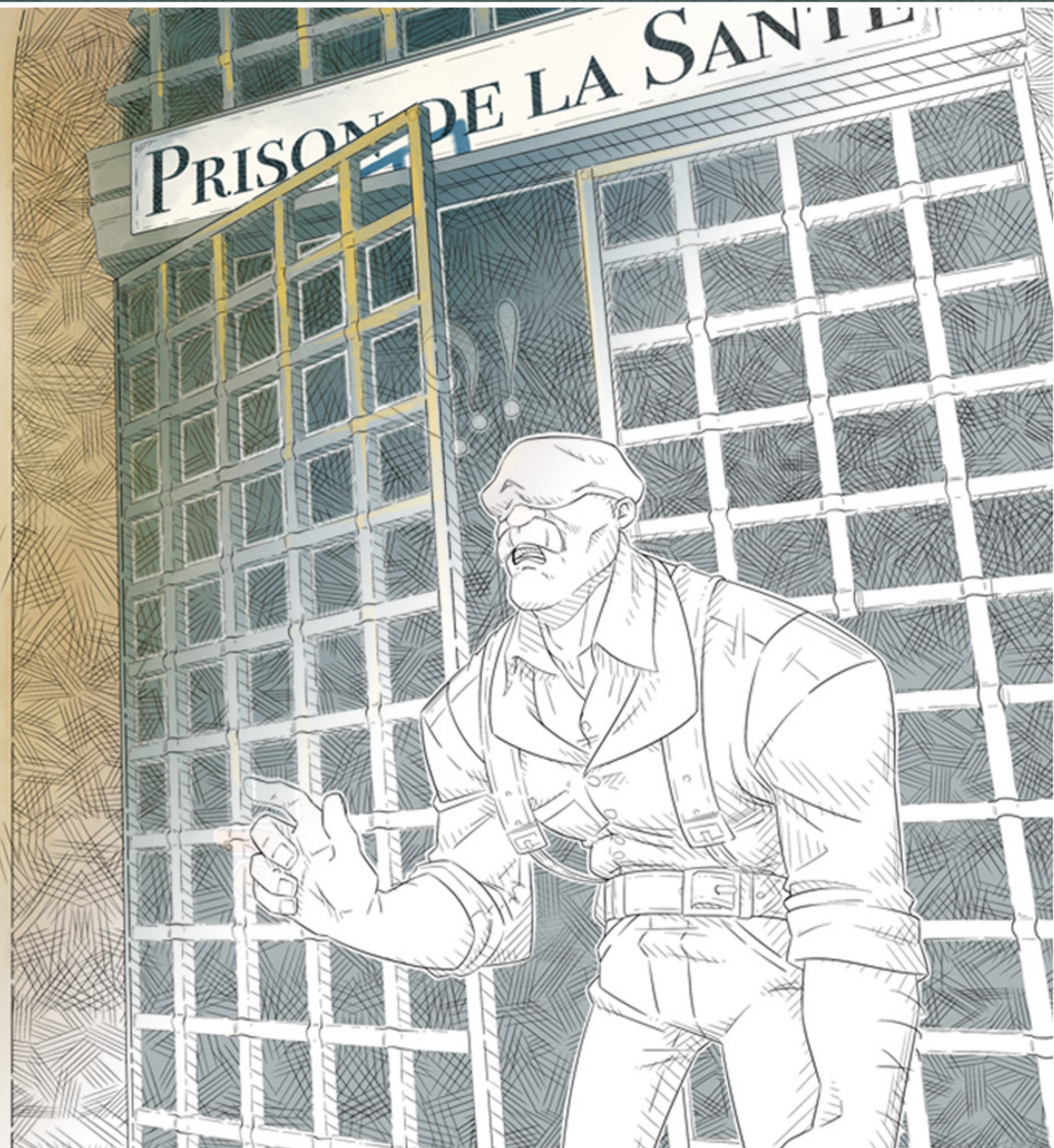




















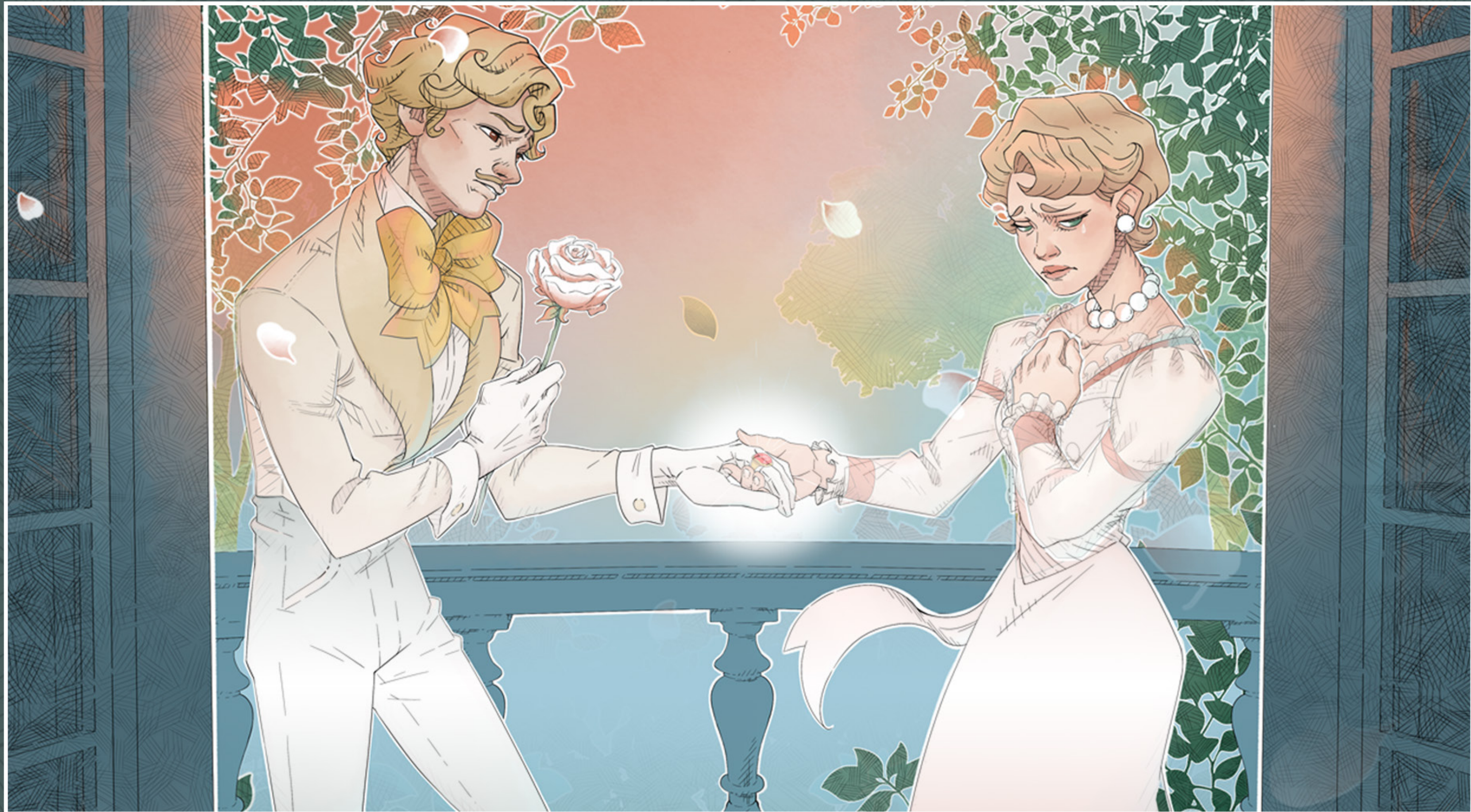






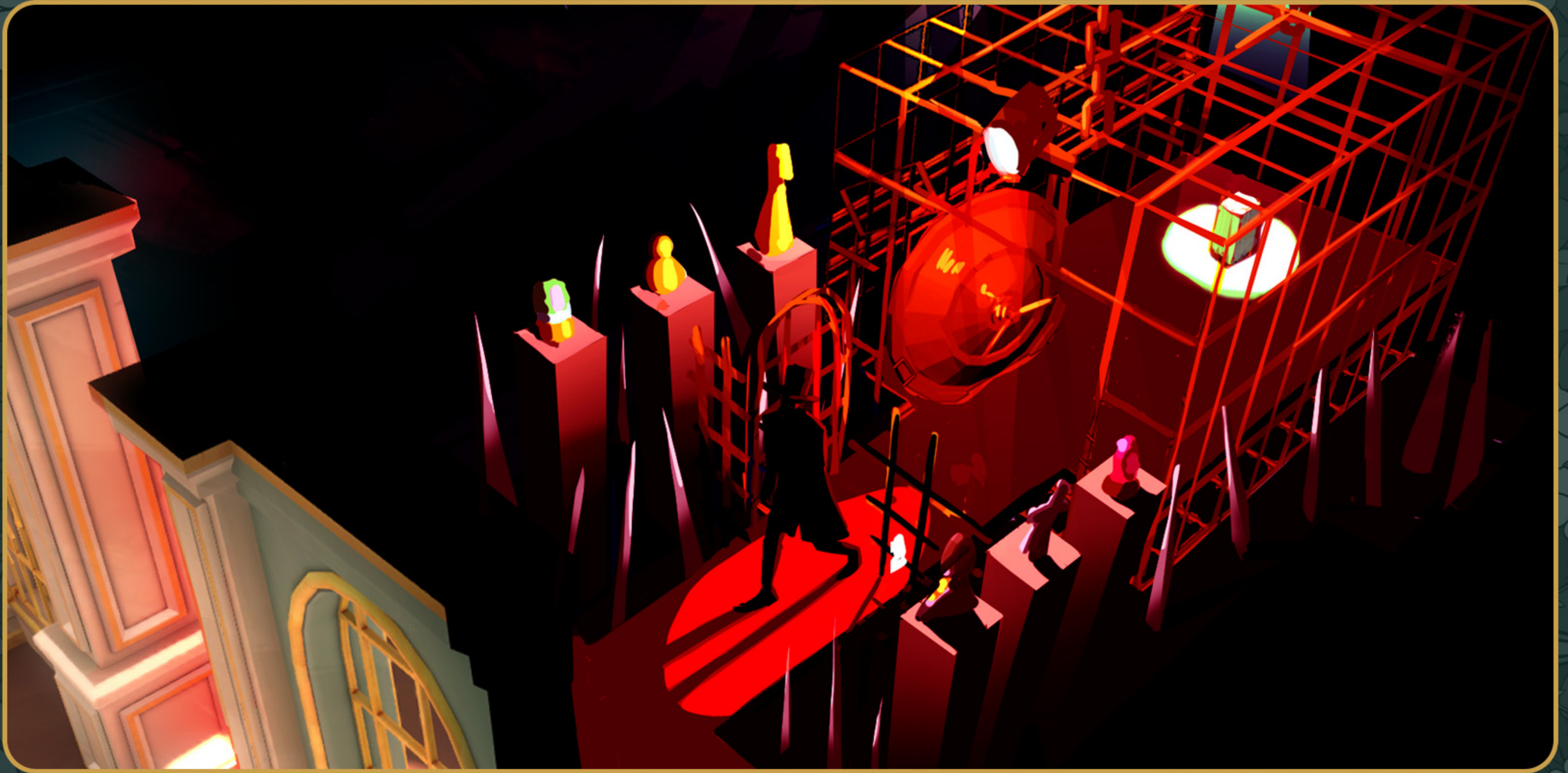








# ENVIRONMENT









# ◆ Château de Malaquis ◆

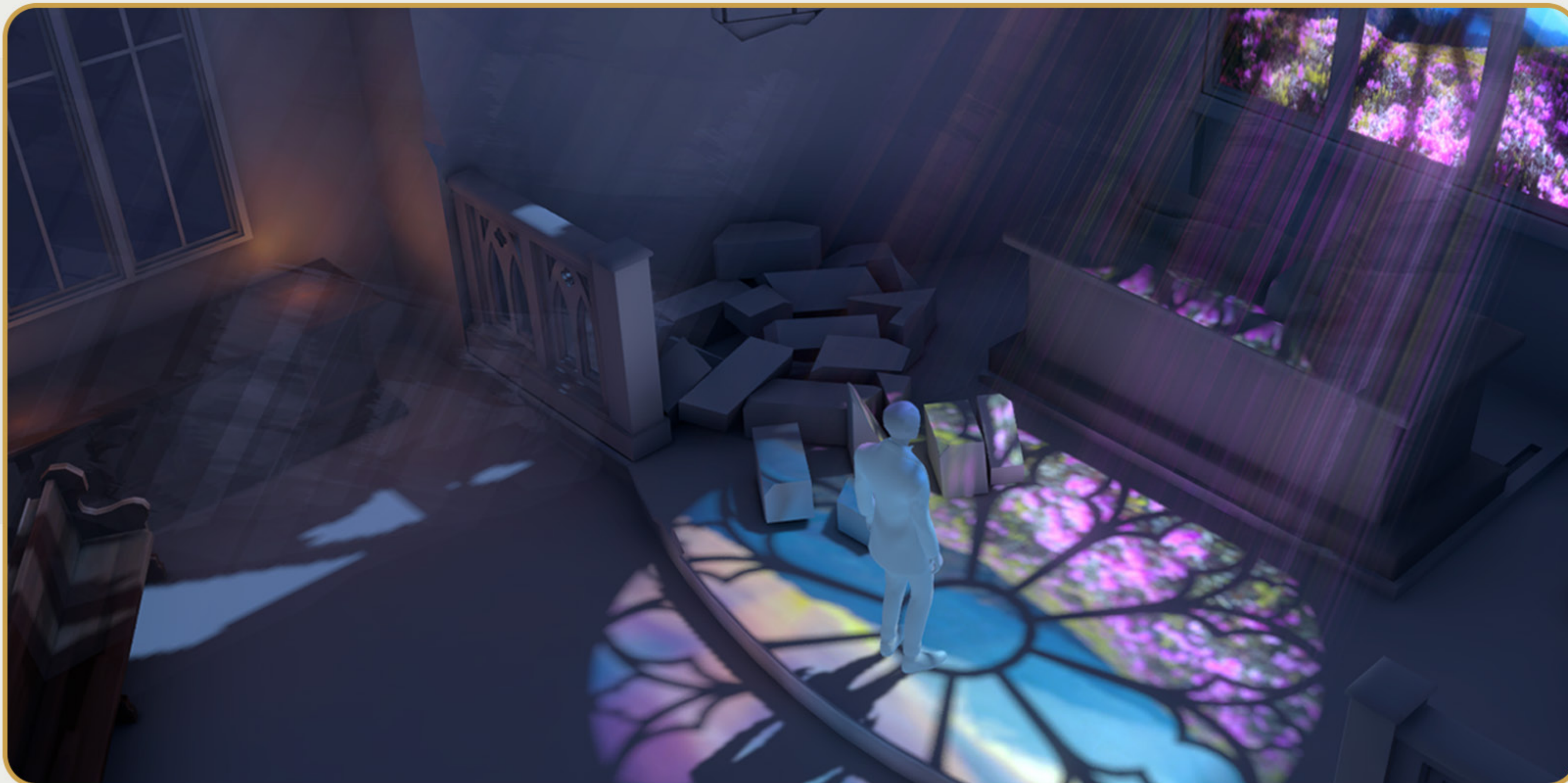








# ◊ Château de Thibermesnil ◊









# SS LA PROVENCE



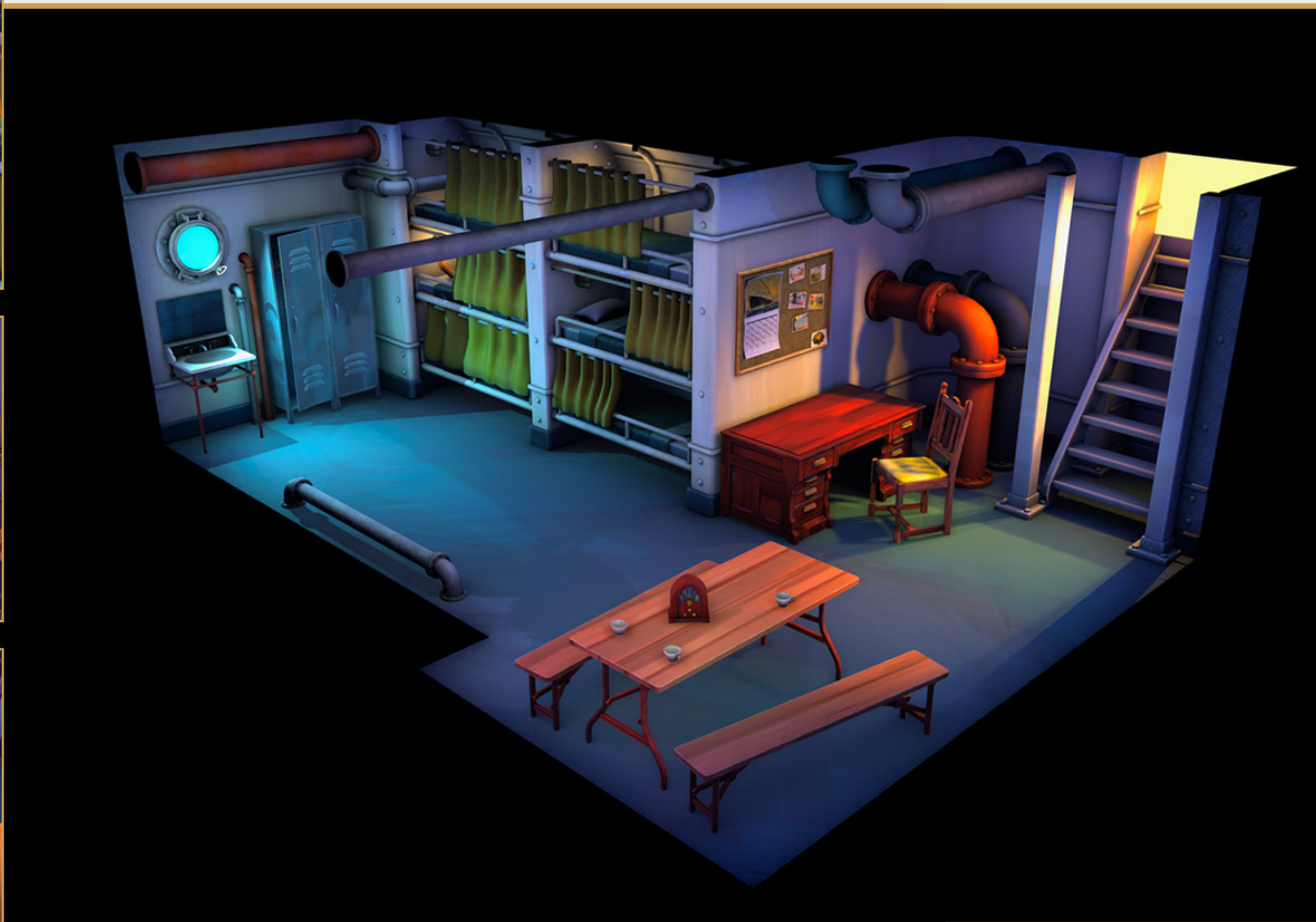




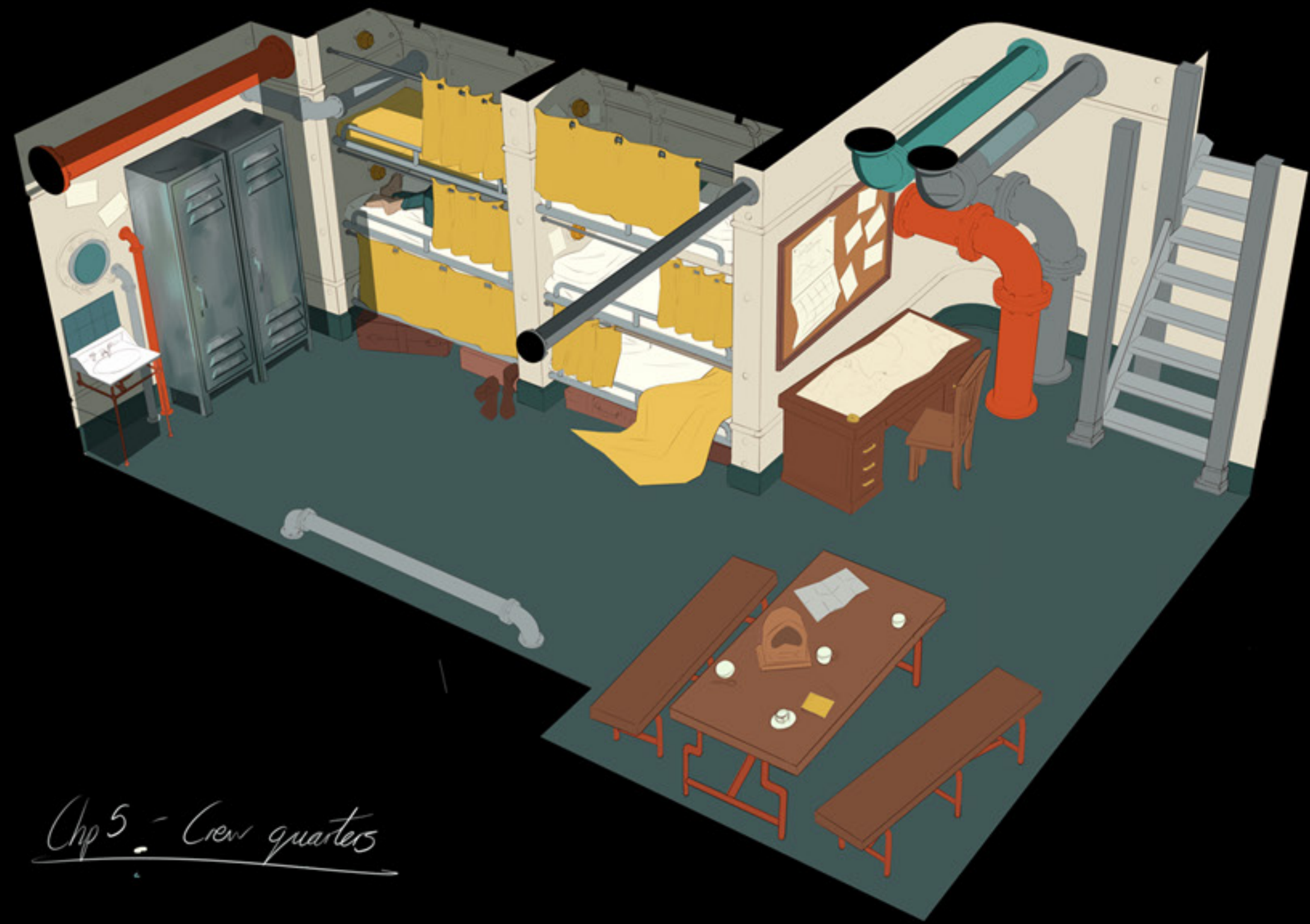
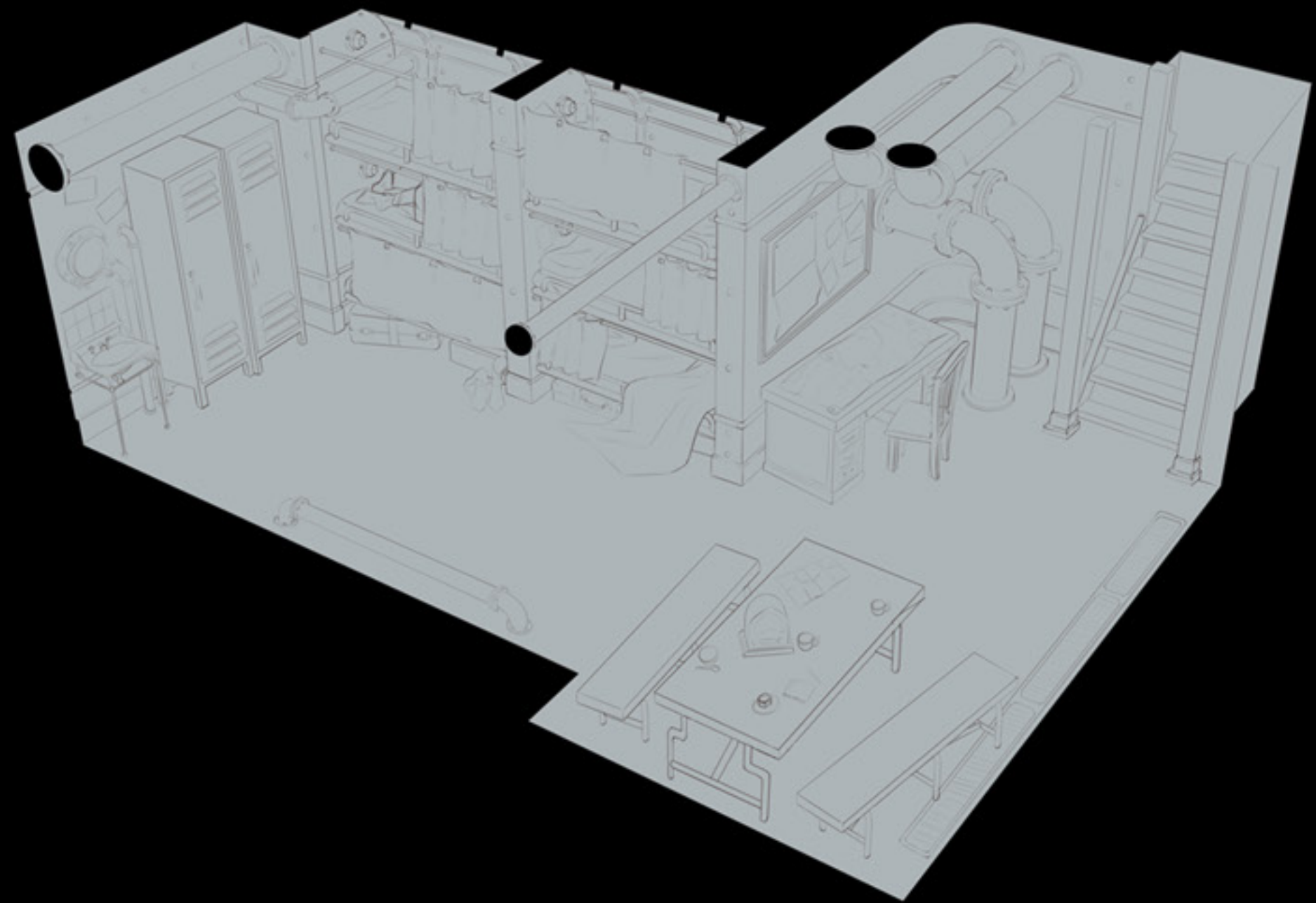








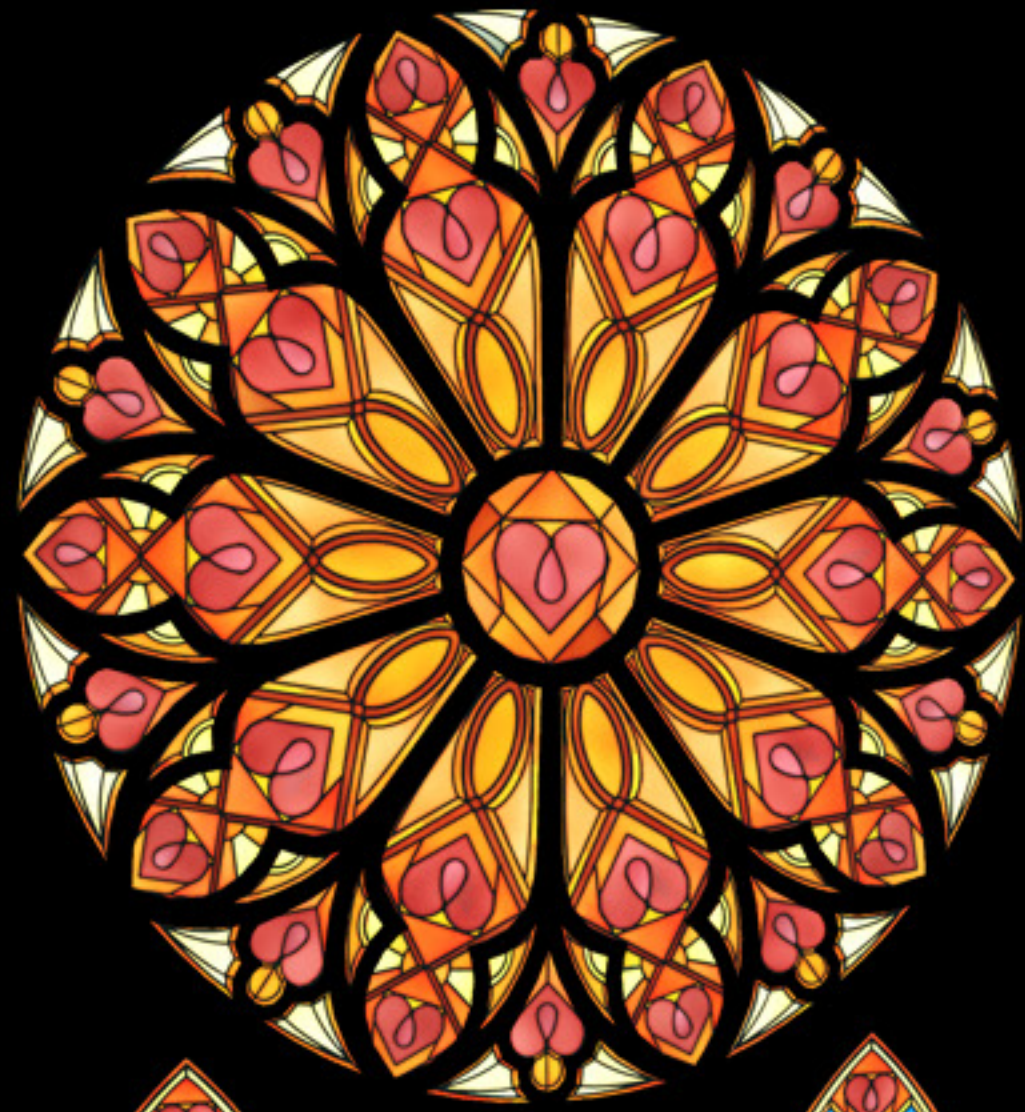




*Chp 5 - Crew quarters*



# PROPS













# UI ARTWORK

1/2

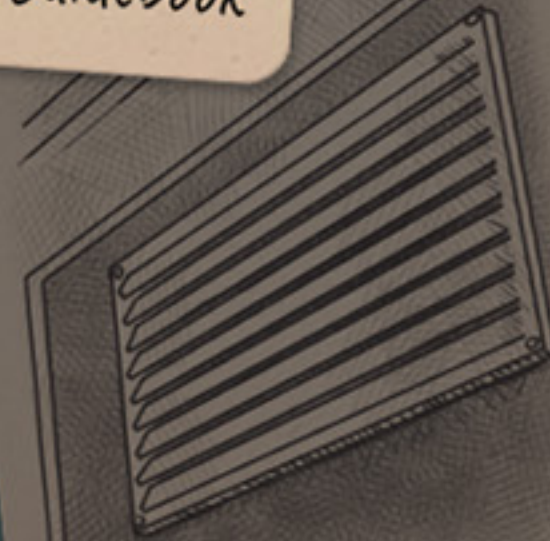
Lady Jerland has a secret lover!  
How is Lady Jerland  
communicating with her lover?



Morse Code Guidebook



Journal



Loose Vent

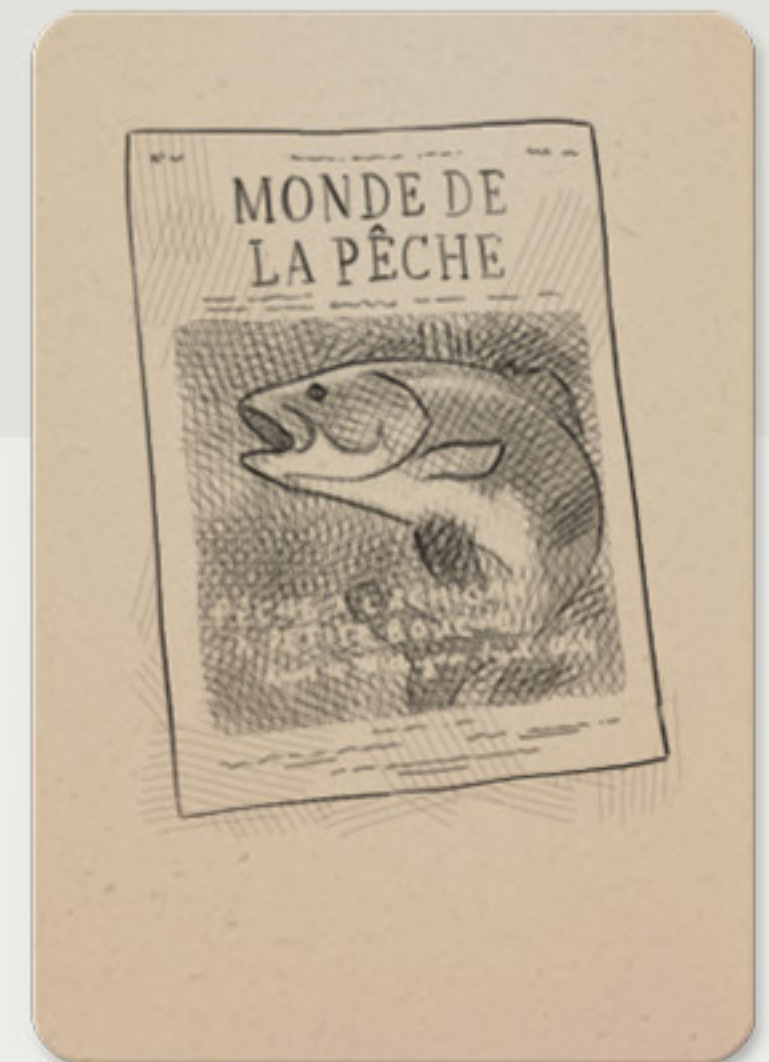
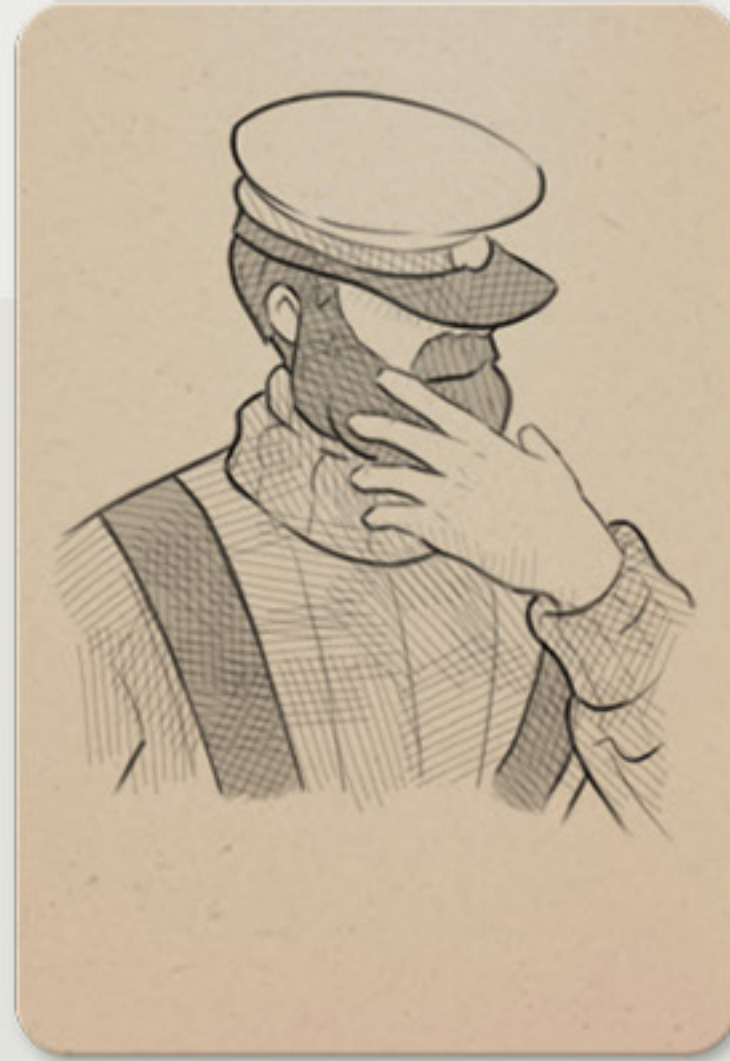
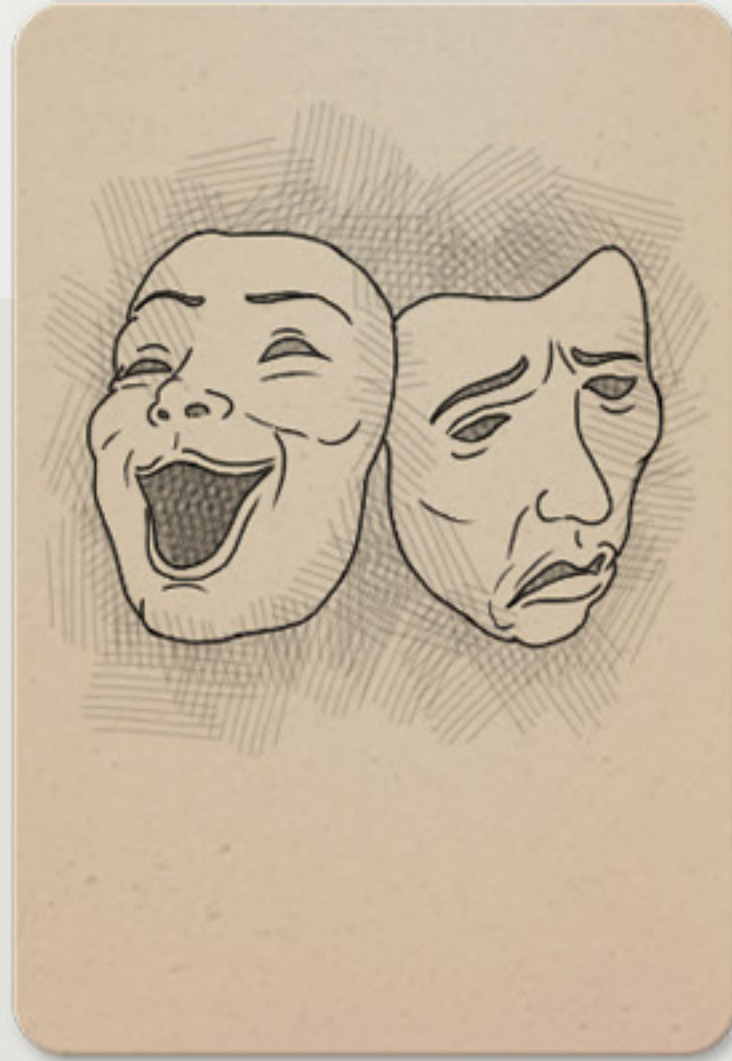


Note from Staff

CONFIRM  
SELECTION

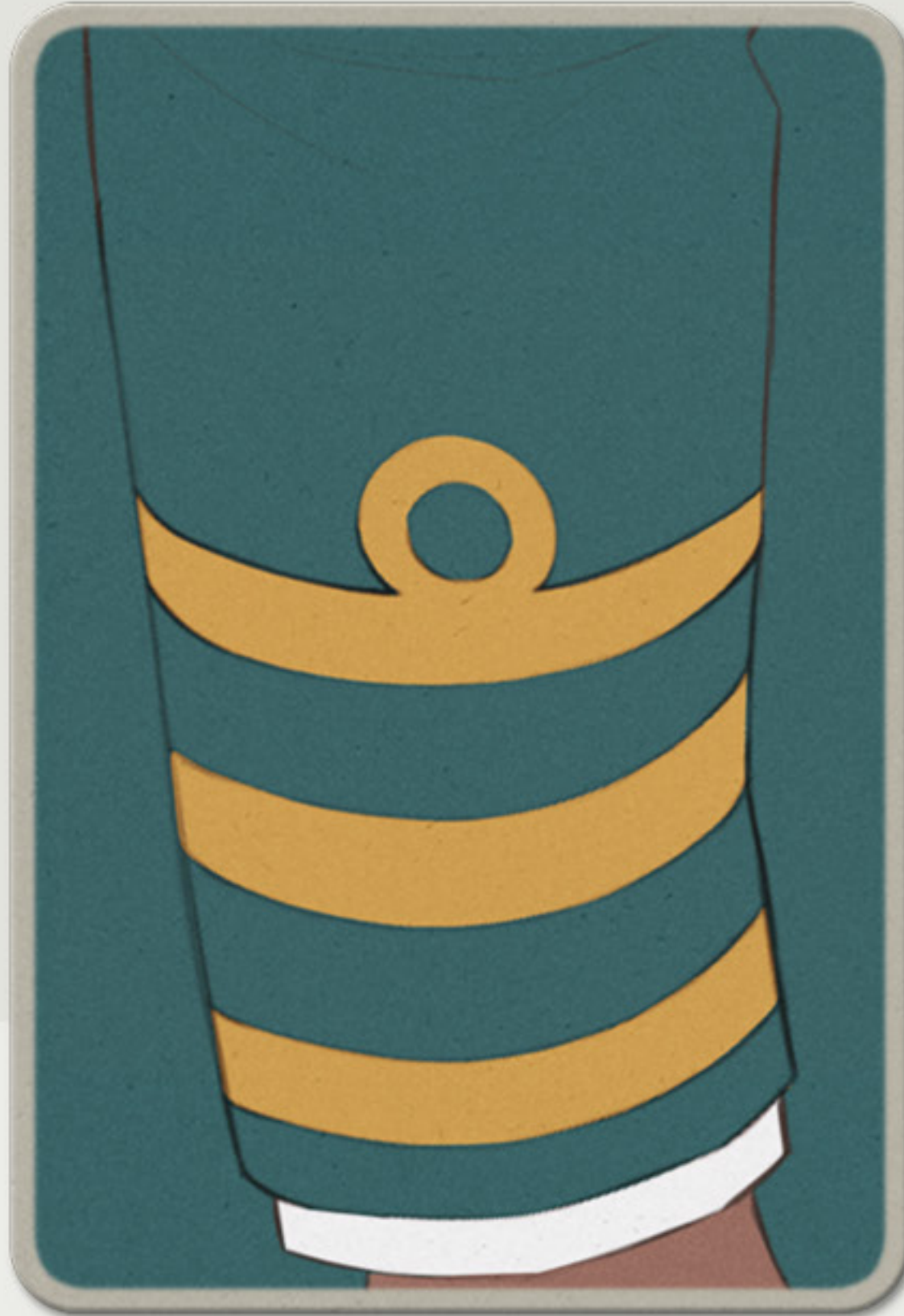


# Match cards





# Match summary cards

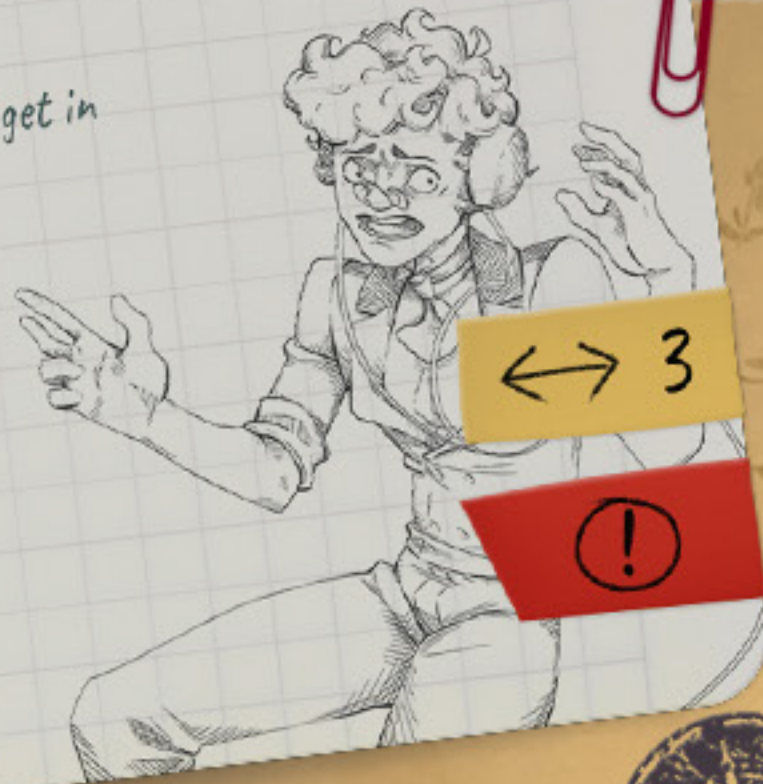




## How did the theft take place?

We had the place locked down! How did the thief get in without being seen!?

- Talk to the guards
- Examine the well
- Find a handle for the pump
- Talk to the servants
- Open the window



### Ganimard's Guards

These two are hardly the best in the business, but at least they don't get distracted by wandering thoughts...

### Servants are innocent

The files from the gallery suggest the servant's couldn't have had anything to do with the theft.

↔ 3



rn was awake



n heard a car horn



Ganimard was asleep

Guards were drugged



Guards were asleep



Guards were posted by Ganimard



### Ganimard's Guards

Guards are innocent



Servants are innocent



### Cahorn and Ganimard



No car engines were heard



### Cahorn's servants



Servants were off-site



People



Employers are innocent





# Minds map cards



**Items**



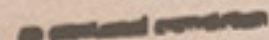
**Characters**



**Locations**



Mrs. Waboungwe: wife, rehearsed by the  
dramatists Paul Waller and Dennis Decker  
as her: unique: Nya Nya, starts with feet  
slamming down to the ground, body bent over  
and crouching in a tight, contained form of  
energy: a diamond that is anything but in the  
rough.



Mrs. Mabeungwe + wife, rehearsed by the  
dramatists Paul Moller and Dorothea Dorothea  
in her company. Myra Myra, starts with her  
stomping dance to the ground, body bent over  
and upright = a light, contained form of  
energy = a diamond that is anything but in the  
world. Mabeungwe + wife, rehearsed by the  
dramatists Paul Moller and Dorothea Dorothea

*Captain.*  
L'appareil de cette machine le p. l'écrit.  
à la fin du grand par-jour y  
naturel.

Maun / Maun a nistella una. Jura  
 ari afa e sive Jura - y ari a  
 nistella de pater dñi ari ari a  
 sive pater / Maun / Maun ari a  
 ari ari a / Maun / Maun ari a  
 pater ari a / Maun / Maun ari a

Elope gaudiosa velis. la aplice bu  
spalter hu pmed anone ab huc  
augend.

Procedendo per l'acqua

per l'anno  
Adina Lupin

MERCREDI 16 JUILLET 1902

# MONDE DE LA PÊCHE

JOURNAL DE PÊCHE MENSUEL  
23 Rue Portman, PARIS (4<sup>th</sup>)

pour Tous vos Besoins de Pêche



Standard - 10 pence per copy

# The Times of London

By JAMES MURPHY



**Solved!**

RECHERCHÉ  
RÉCOMPENSE!!

I am again alone and alone, compelled to optimize  
 life. Dear commands, please be gentle with  
 Every one there!

Address of the student

**Dons Auction House**

fourth and fifth years.

46 février 1895

Ans'd M. Perry  
By L. C. Perry

Mem. Jean-Baptiste Wallcut, Treasurer

John M. H. Percy

4.200

Trade - by sea



# CREDITS

## LUPIN ART TEAM

Fiona Burton

Charlotte Carey

David Henson

Adriana Mattia

Sean McKinlay

Chris Rafferty

Liam Rendall

Molly Whitt



Arsene Lupin – Once A Thief ©2024 Microids SA. All rights reserved. Published by Microids SA.  
Developed by Blazing Griffin. Based on Maurice Leblanc's saga. © 2024 Arsène Lupin

LOOSELY ADAPTED FROM THE WORK OF  
MAURICE LEBLANC

